

State of Wyoming Corner Record

(in compliance with the CORNER PERPETUATION AND FILING ACT, Wyoming Statutes, 1997, Section 33-29-140, et. seq and the Rules and Regulations of the Board of Registration for Professional Engineers and Professional Land Surveyors)

Reverse side of this form may be used if more space is needed.

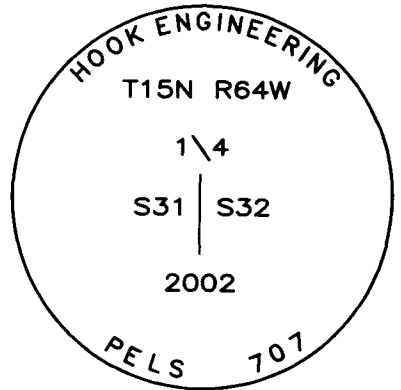
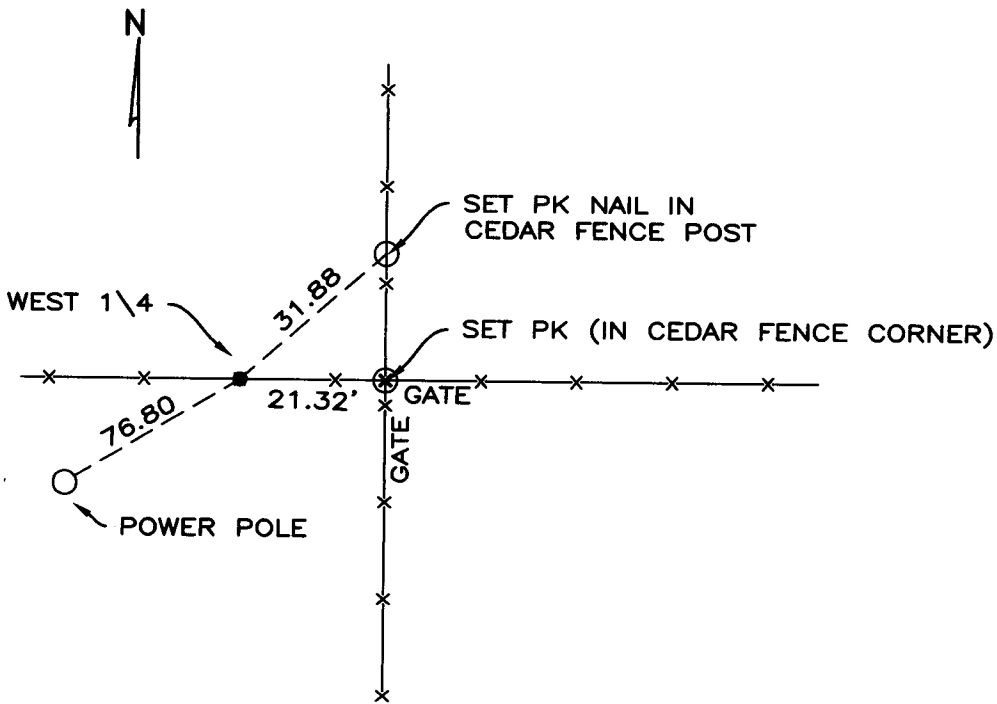
Record of original survey and citation of source of historical information (if corner is lost or obliterated). Description of corner monumentation evidence found and/or monument and accessories established to perpetuate the location of this corner. Sketch of relative location of monument, accessories, and reference points with course and distance to adjacent corner(s) (if determined in this survey). Method and rationale for reestablishment of lost or obliterated corner.

FOUND: 5/8" REBAR SET IN FENCE WITH 1\4 STONE FOUND NEXT TO REBAR.

G.L.O. RECORD:

SET: 3" ALUMINUM CAP ON 5/8" FOUND REBAR

REFERENCES: SET AS SHOWN



SET MONUMENT DETAIL

Date of Field work: MARCH 27,2002

Office Reference: _____

CROSS INDEX DIAGRAM

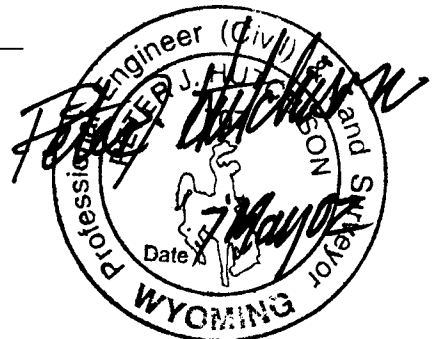
1	2	3	4	5	6	7	8	9	10	11	12	13	14	15	16	17	18	19	20	21	22	23	24	25
A																								
B	6	5	4	3	2	1																		
C																								
D																								
E																								
F																								
G	7	8	9	10	11	12																		
H																								
J																								
K																								
L	18	17	16	15	14	13																		
M																								
N																								
O																								
P	19	20	21	22	23	24																		
Q																								
R																								
S	30	29	28	27	26	25																		
T																								
U																								
V																								
W																								
X	31	32	33	34	35	36																		
Y																								
Z																								

Firm/Agency, Address

This corner record was prepared by me or under my direction and supervision.

SEAL & SIGNATURE

Phone: _____



Corner Name: QUARTER CORNER Section: 31\32 T 15N R 64W 6TH P.M. Cross-Index No: X-5